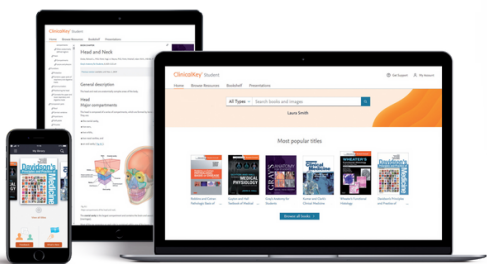


Medical colleges affiliated with Rajiv Gandhi University of Health Sciences Karnataka (RGUHS) have access to **High-Quality Medical Resources**

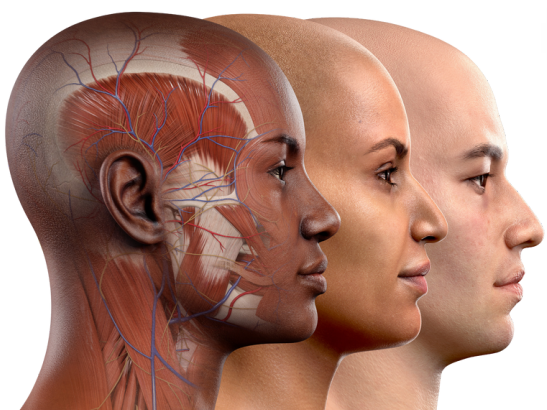
ClinicalKey® Student



A Comprehensive Teaching and Learning tool with:

- 380+ UG Textbooks & Reference
- 210,000+ Downloadable Images
- 2500+ Dissection and Clinical Exam Videos
- 2000+ Synoptic Quick Access Summaries

Complete Anatomy



The world's most advanced 3D Anatomy platform with:

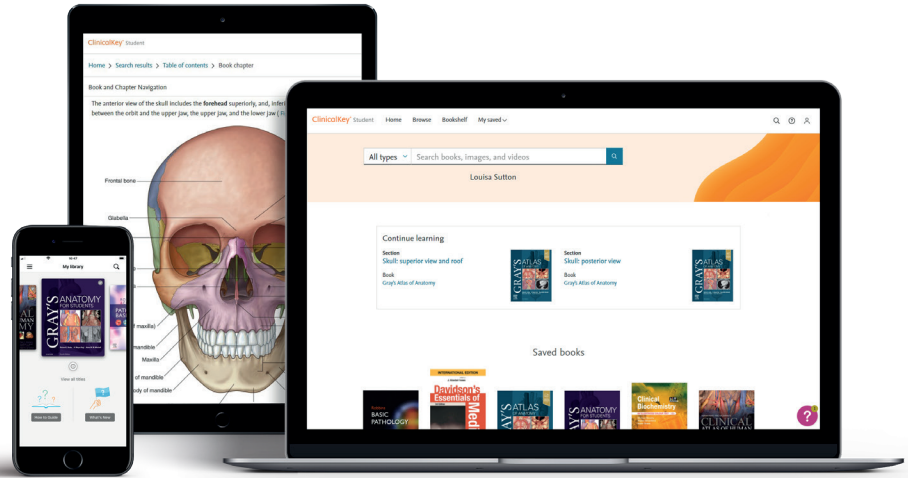
- 17,000+ selectable 3D structures
- 300+ Lectures
- 1,500+ Videos
- 700+ updated atlas views - Inspired by Gray's Anatomy

Join the **RGUHS Support Group** on WhatsApp for quick answers and query resolutions.



Getting started with ClinicalKey Student

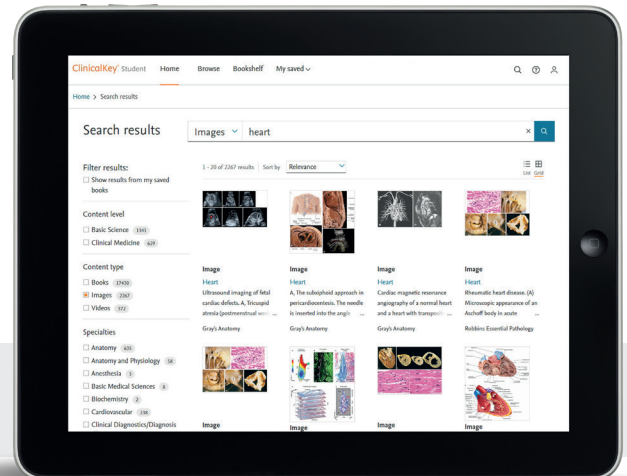
ClinicalKey Student is an interactive education platform that gives you access to hundreds of acclaimed textbooks, copyright cleared images, videos and tools that enhance your teaching.



Add images to lecture materials


- Search for a specific image from the Homepage or Browse all available images
- Select an image and then click “Add to Presentation”
- Add the image to an existing presentation or create a new presentation

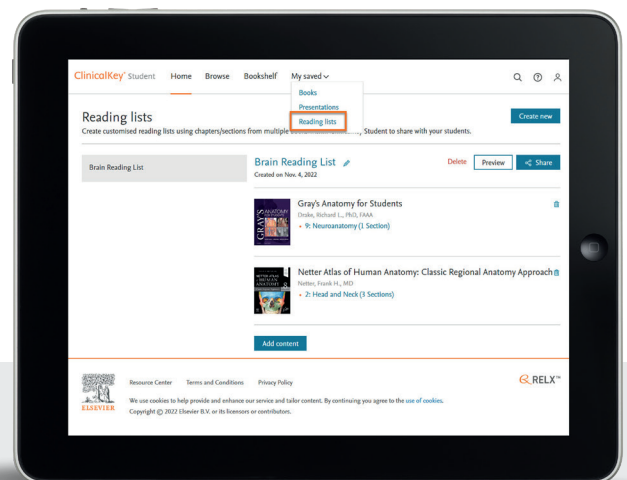
Tip: Manage your presentations under the “My saved” tab or Download them to make further edits in PowerPoint



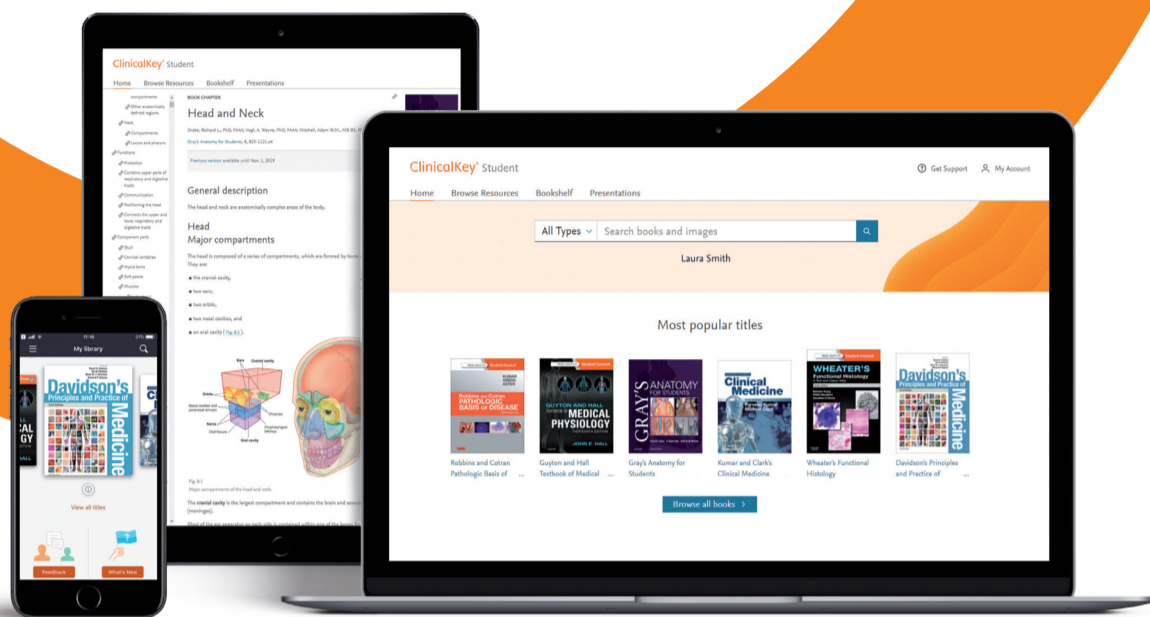
Share content with students

- Find “Reading lists” under the “My saved” tab
- Click “Create new” and start adding content by selecting specific chapters or sections from different textbooks
- Clicking the “Share” button will automatically save a link to your clipboard for you to paste in your lecture materials

Tip: If you want to quickly share a link to one specific chapter without creating a Reading list, click the  and paste the copied link wherever you would like



A Step-by-Step Guide to accessing ClinicalKey® Student



Step 1

Login to Remote Log
<https://rguhs.remotlog.com/login>

Step 2

Open 'E-books' tab and select
ClinicalKey Student to access books,
videos, images, and summaries

Step 3

You will now be redirected to
ClinicalKey Student

Step 4

Log in using your **Email
Address** and **Password**, new
users click '**Register Here**' to
create your own profile

Step 5

Complete the sign up process
to start browsing the resources
on the **ClinicalKey Student**

To
experience the
full benefits of
**ClinicalKey
Student**

1

Sign up on India Skills Video
<https://indiambbsskills.clinicalkey.com/login/index.php>

2

**Download
ClinicalKey Student Bookshelf**
on your mobile phone for
convenient offline access



For detailed instructions, check the 'Tutorial' section of Remote Log

Join the **RGUHS Support Group** on WhatsApp
for quick answers and query resolutions

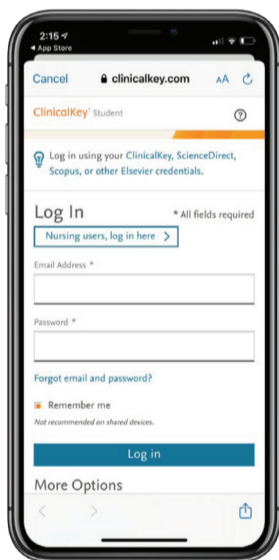
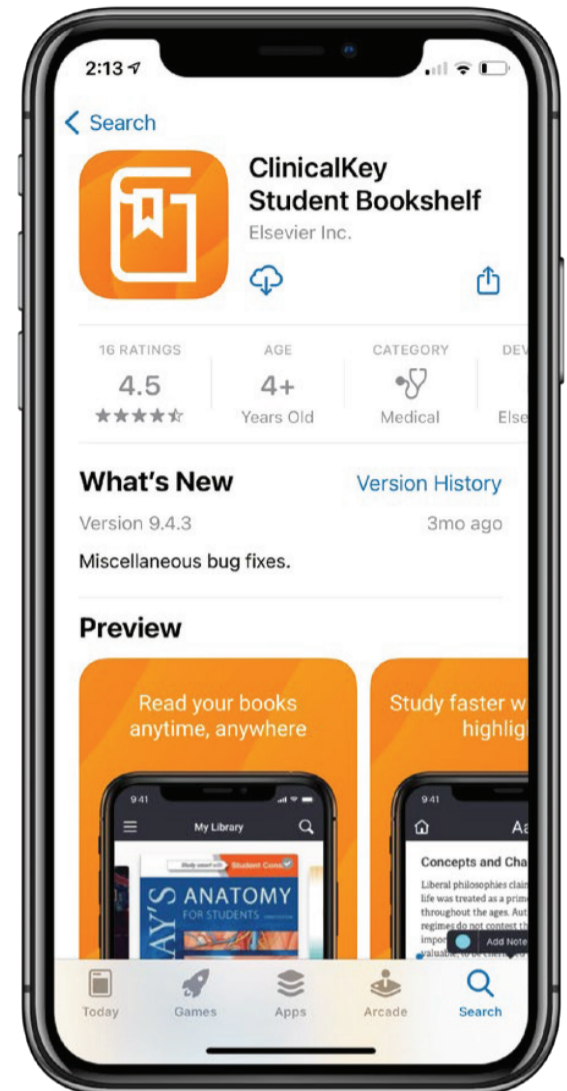


Learn on the go with the ClinicalKey Student Bookshelf App

ClinicalKey® Student

The ClinicalKey Student Bookshelf App Bookshelf mobile app gives you offline, convenient access to content and powerful study tools. Highlight text, make notes and create flashcards from your mobile or tablet on the go.

Download the app now!



How to login on the Bookshelf App

1. Open the ClinicalKey Student Bookshelf App and click 'Sign In'.
2. Log in using your ClinicalKey Student account credentials.

Tip:

Before accessing the App, ensure you have created a personal account and added titles to your ClinicalKey Student Bookshelf in a web browser. Here's how: **1** Select a book, **2** Open a chapter, **3** Download to bookshelf.



For any queries, email us at hssalesin@elsevier.com

Follow us on    @ElsevierIndia



Unlocking Resources:
Step-by-Step Guide to Access
ClinicalKey Student and
Complete Anatomy

ClinicalKey® Student Complete Anatomy



A Step-by-Step Guide for Accessing ClinicalKey Student and Complete Anatomy at RGUHS Affiliated Medical Colleges

This presentation provides a user-friendly, step-by-step guide to unlock the valuable resources of ClinicalKey Student and Complete Anatomy.

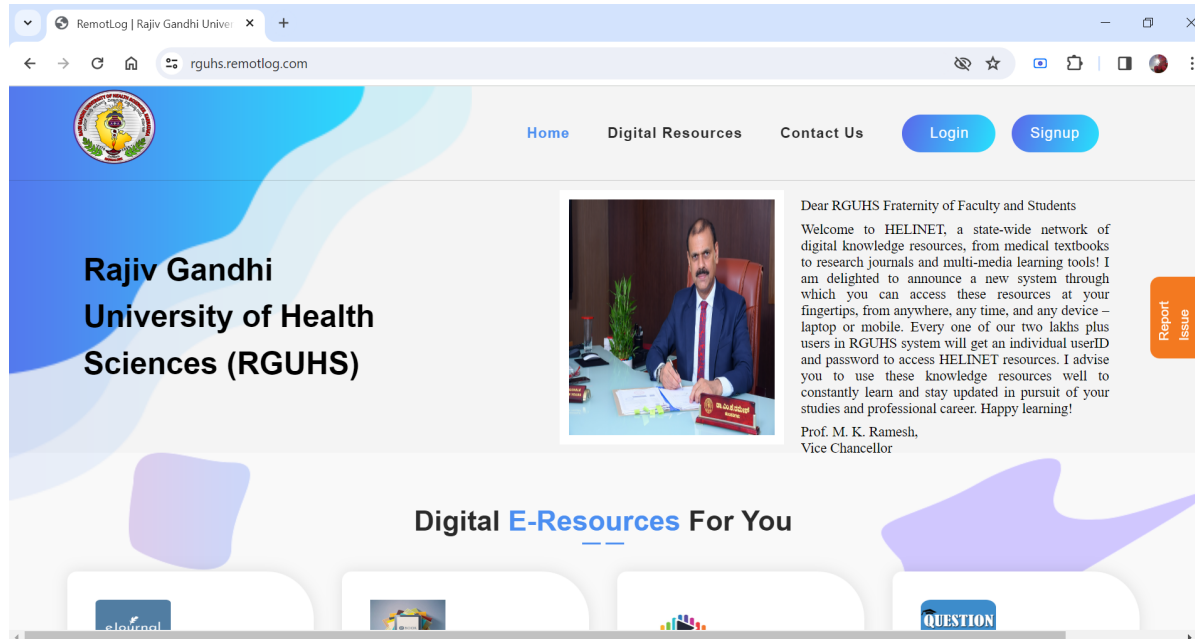
This guide covers how to:

1. Login to Remote Log
2. Access ClinicalKey Student
3. Access Complete Anatomy

How to login to Remote Log

To Access the Elsevier digital resources subscribed by the Rajiv Gandhi University of Health Sciences (RGUHS)

Visit the Link - <https://rguhs.remotlog.com/>



RemotLog | Rajiv Gandhi Univer x +

rguhs.remotlog.com

Home Digital Resources Contact Us Login Signup

Rajiv Gandhi University of Health Sciences (RGUHS)

Dear RGUHS Fraternity of Faculty and Students

Welcome to HELINET, a state-wide network of digital knowledge resources, from medical textbooks to research journals and multi-media learning tools! I am delighted to announce a new system through which you can access these resources at your fingertips, from anywhere, any time, and any device – laptop or mobile. Every one of our two lakhs plus users in RGUHS system will get an individual userID and password to access HELINET resources. I advise you to use these knowledge resources well to constantly learn and stay updated in pursuit of your studies and professional career. Happy learning!

Prof. M. K. Ramesh,
Vice Chancellor

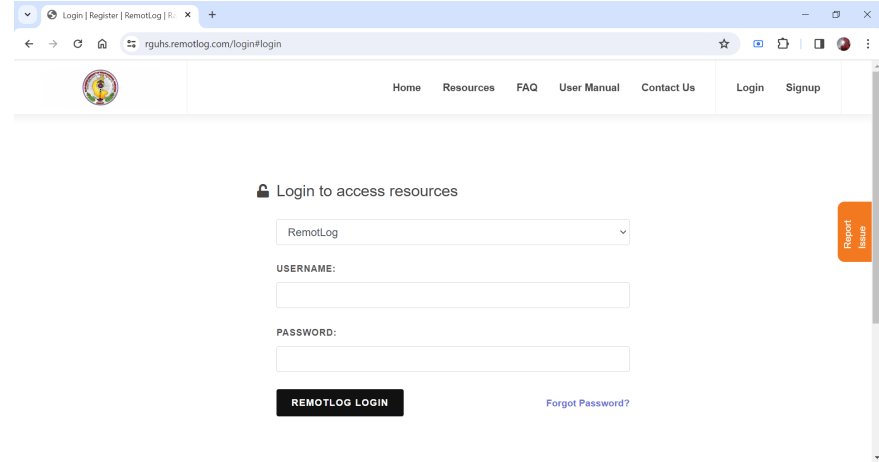
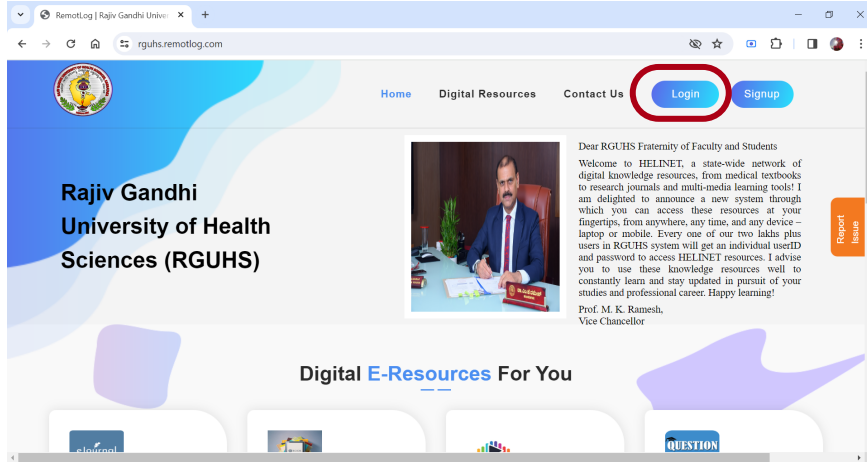
Report Issue

Digital **E-Resources** For You

eJournal eBooks QUESTION

Click on the button **Login** - <https://rguhs.remotlog.com/login#login>

- On the login page – enter your Username and Password

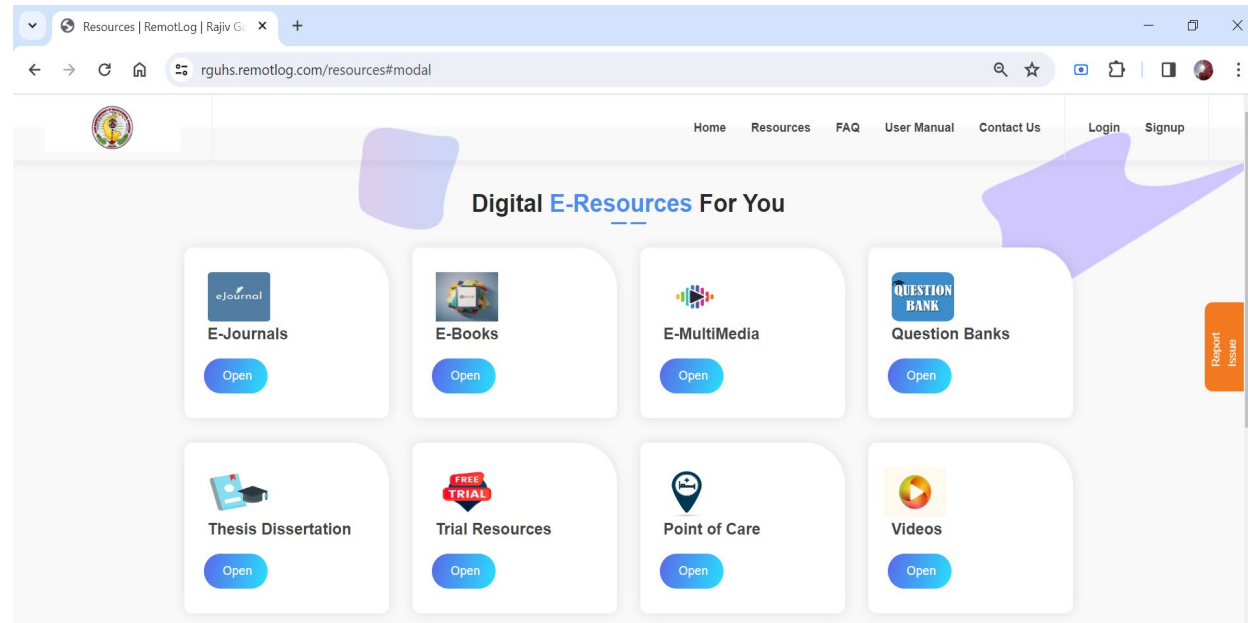


Note: If you don't know your username and password, please speak to your institute librarian.

After successfully logging-in you will be directed to the home page where you will find all the resources.

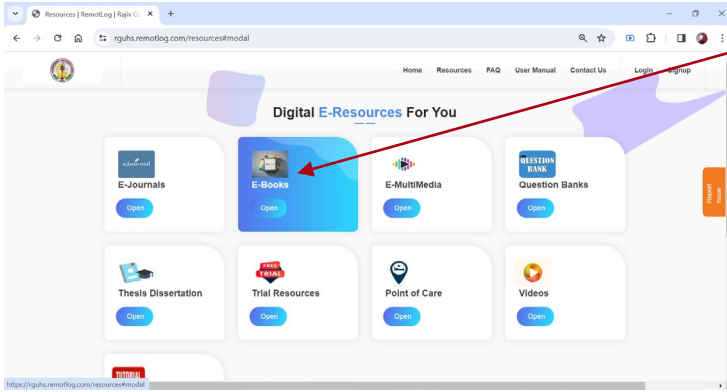
From Elsevier you have access to following Resources:

1. Clinical Key Student
2. Complete Anatomy

A screenshot of a web browser showing the "Resources" page of the RemotLog system. The browser's address bar displays "rguhs.remotlog.com/resources#modal". The page features a navigation menu with links for Home, Resources, FAQ, User Manual, Contact Us, Login, and Signup. The main heading is "Digital E-Resources For You". Below this, there are eight resource categories, each with an icon, a title, and an "Open" button: E-Journals, E-Books, E-MultiMedia, Question Banks, Thesis Dissertation, Trial Resources (marked with a "FREE TRIAL" badge), Point of Care, and Videos. A vertical "Report Issue" button is located on the right side of the page.

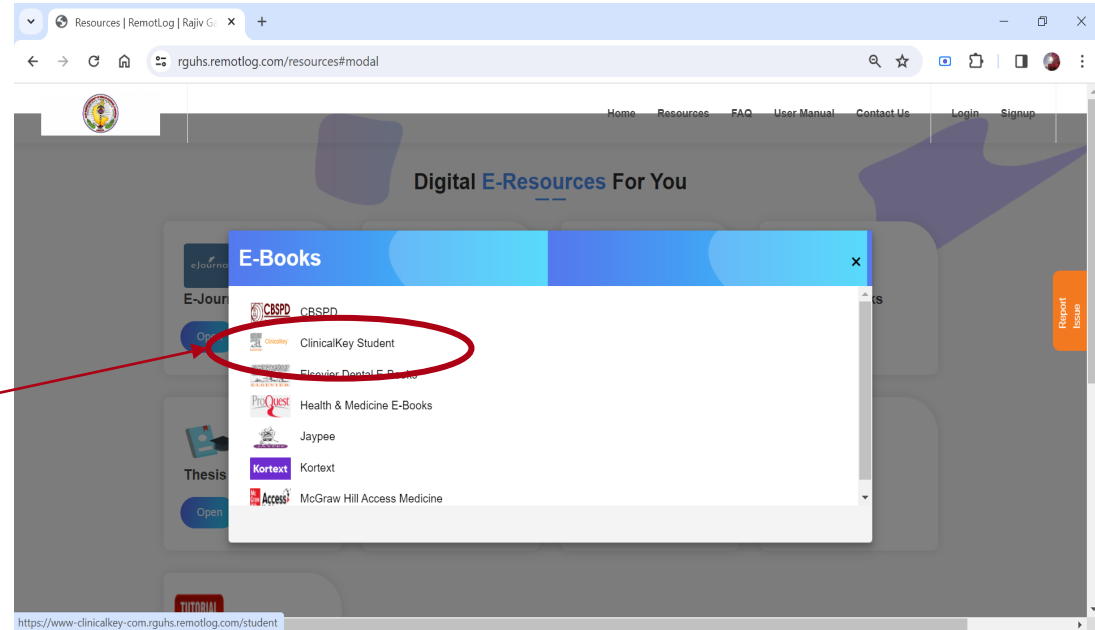
How to Access Clinical Key Student

- On the Remote Log homepage click Open on the e-books tab



- It will open the eBooks tab with all available resources.

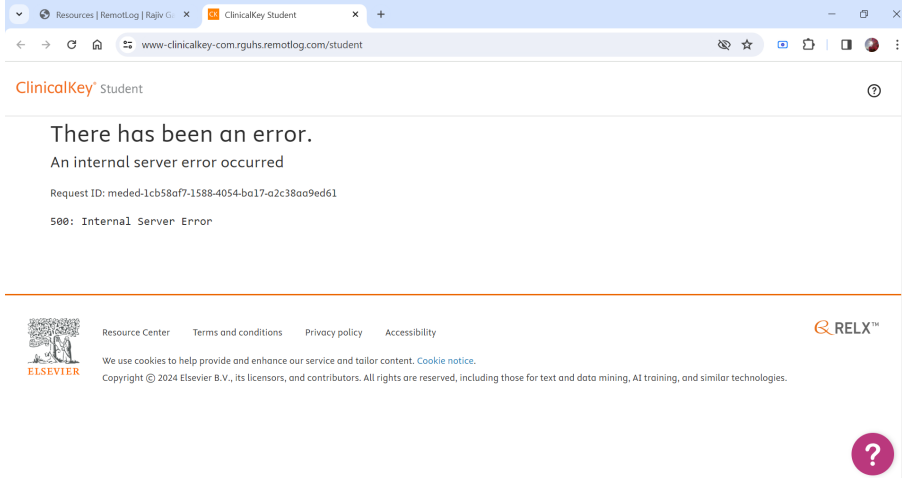
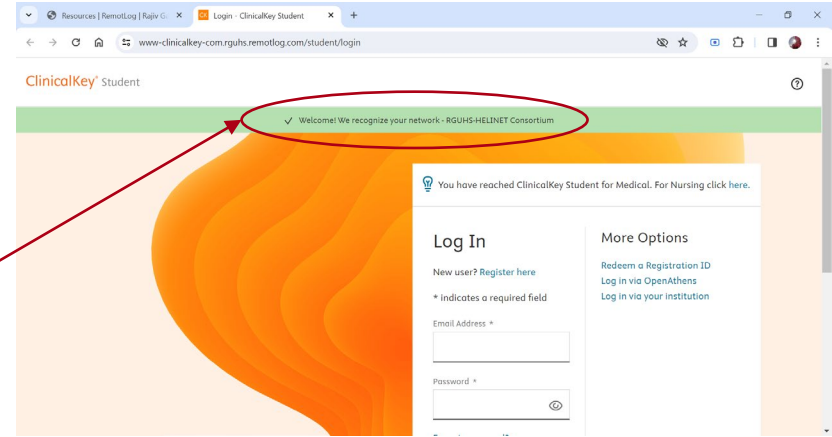
- Click on ClinicalKey Student to access all books, videos and images and summaries.



- You will now be redirected to ClinicalKey Student -

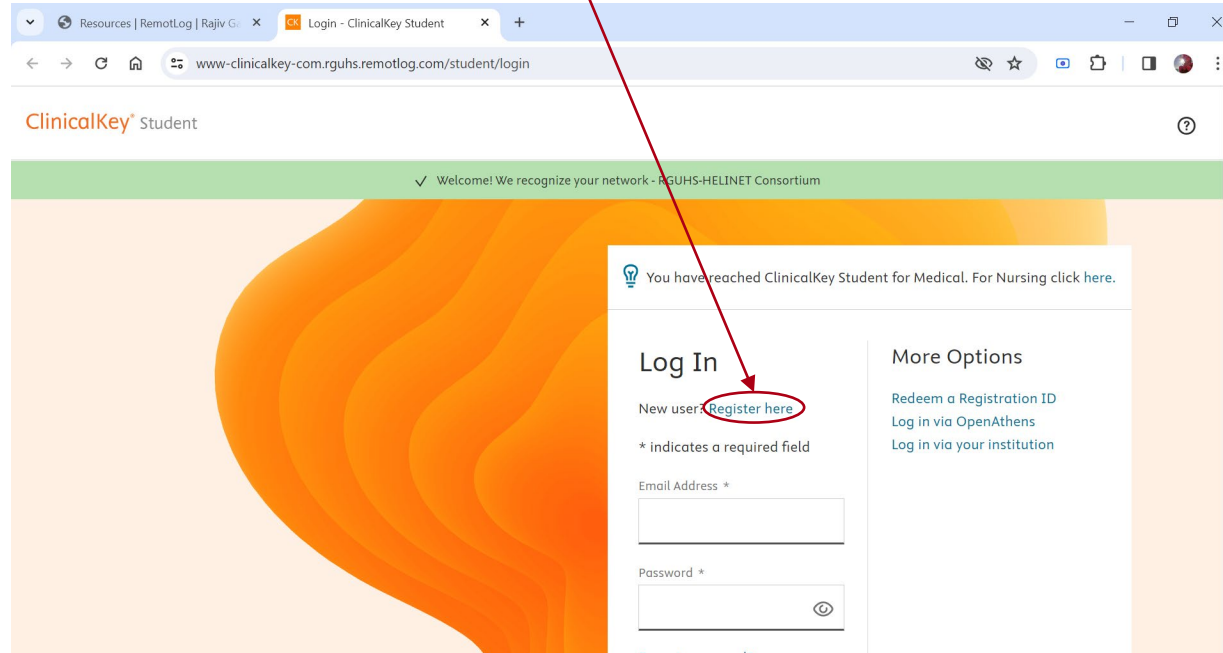
<https://www-clinicalkey-com.rguhs.remotlog.com/student/login>

- To validate your login, look out for this message on the screen –
'Welcome! We recognize your network -
RGUHS-HELINET Consortium'



If you see an error page, refresh the page to
<https://www-clinicalkey-com.rguhs.remotlog.com/student/login>

- If you have used ClinicalKey Student before, enter the Email Address and Password.
- Use 'Forgot Password' in case you don't remember your password.
- If you are a new user, click 'Register Here' to create your own profile

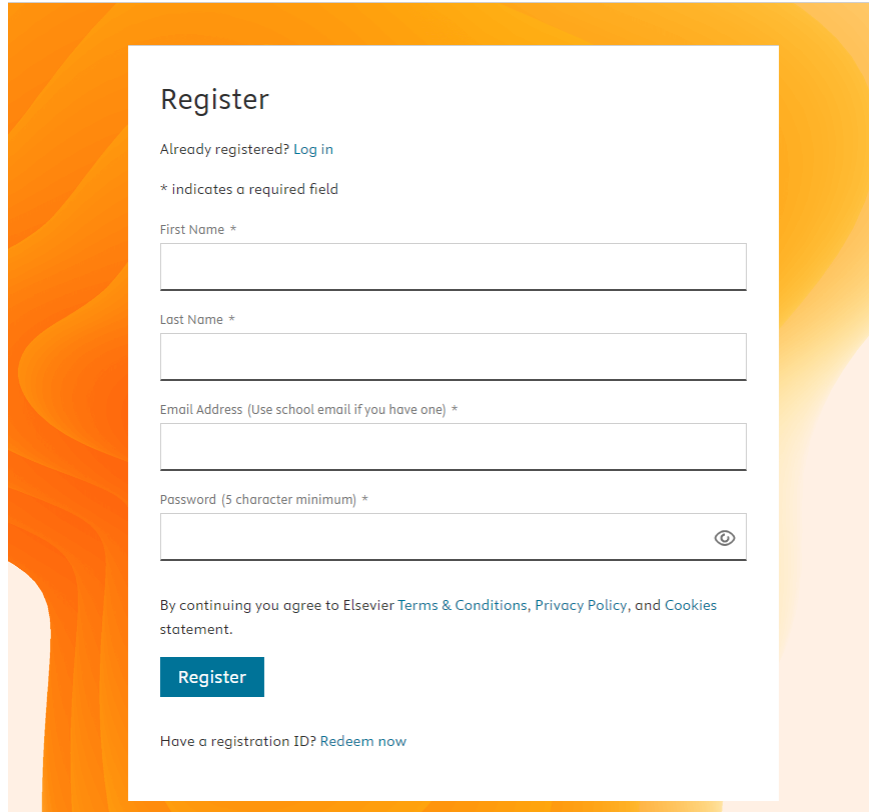


Note 1: The login details for ClinicalKey Student platform are different from Remote Log



- Use this simple form to create your own account

Note - If you encounter the below **Error** during this process:



Register

Already registered? [Log in](#)

* indicates a required field

First Name *

Last Name *

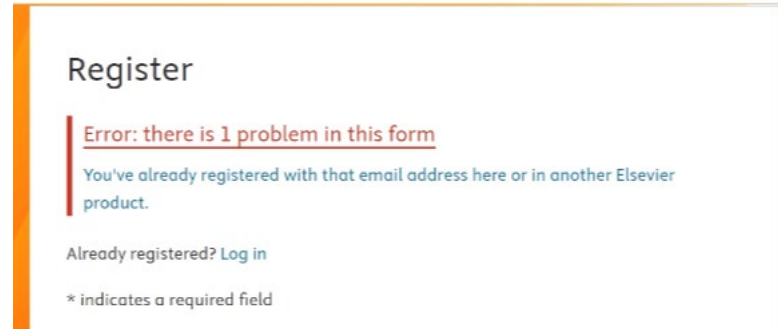
Email Address (Use school email if you have one) *

Password (5 character minimum) *

By continuing you agree to Elsevier [Terms & Conditions](#), [Privacy Policy](#), and [Cookies statement](#).

Register

Have a registration ID? [Redeem now](#)



Register

Error: there is 1 problem in this form

You've already registered with that email address here or in another Elsevier product.

Already registered? [Log in](#)

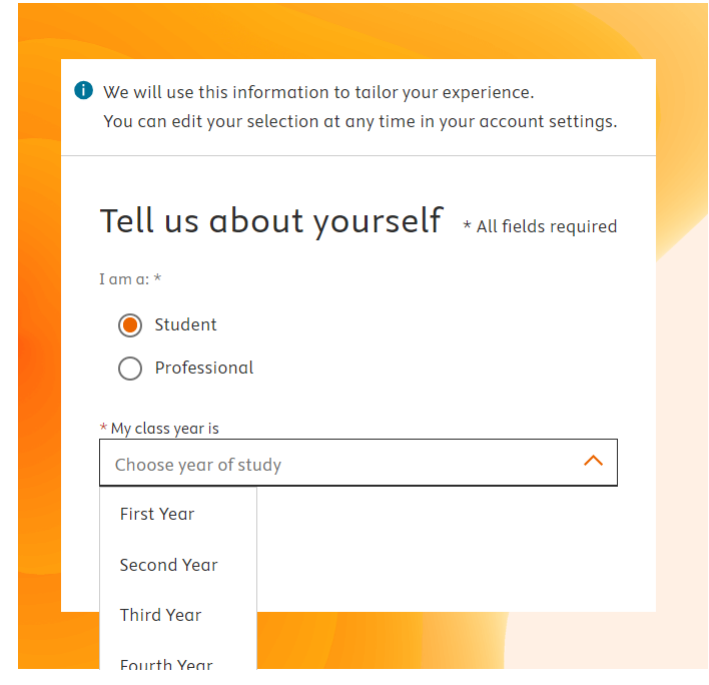
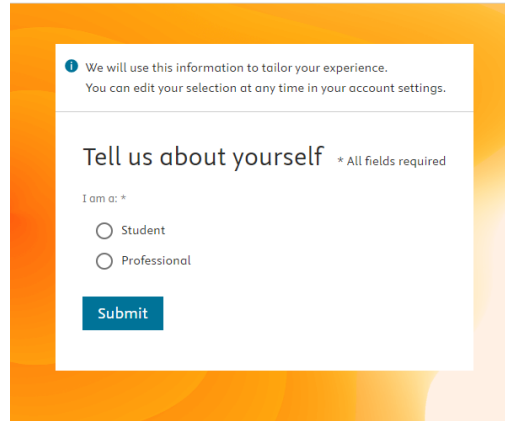
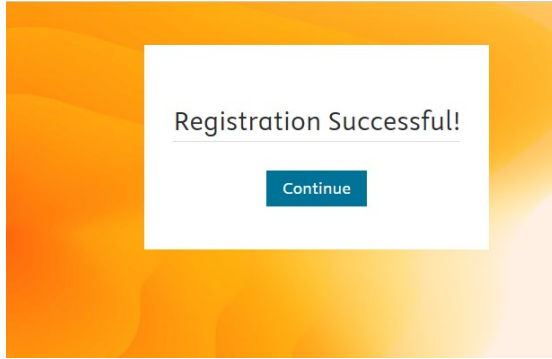
* indicates a required field

- Go to login page and use 'forgot password' to reset the password.

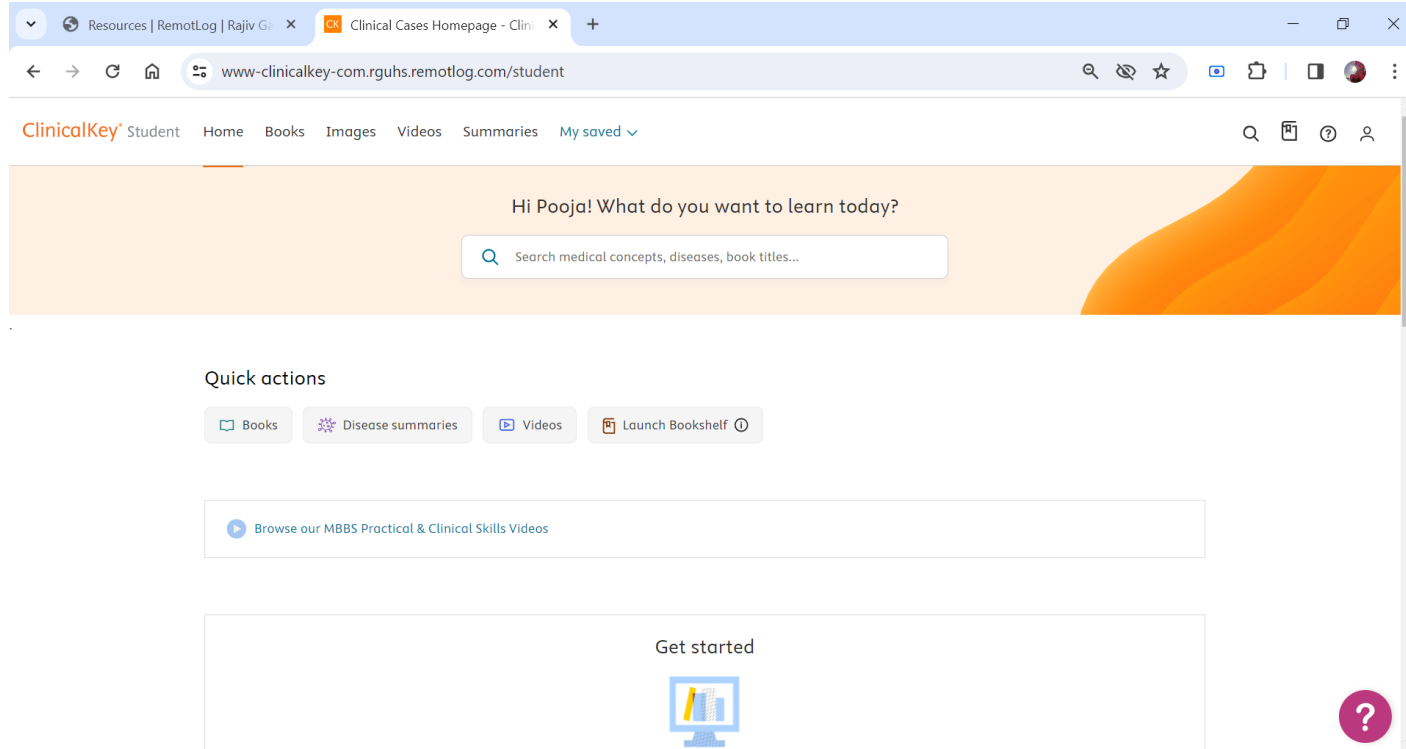
Or

- Use different email id to create your profile

- Once you finish the form, you will see the screen with 'Registration Successful'.
- Click on 'Continue' and follow the simple steps from here to complete your profile



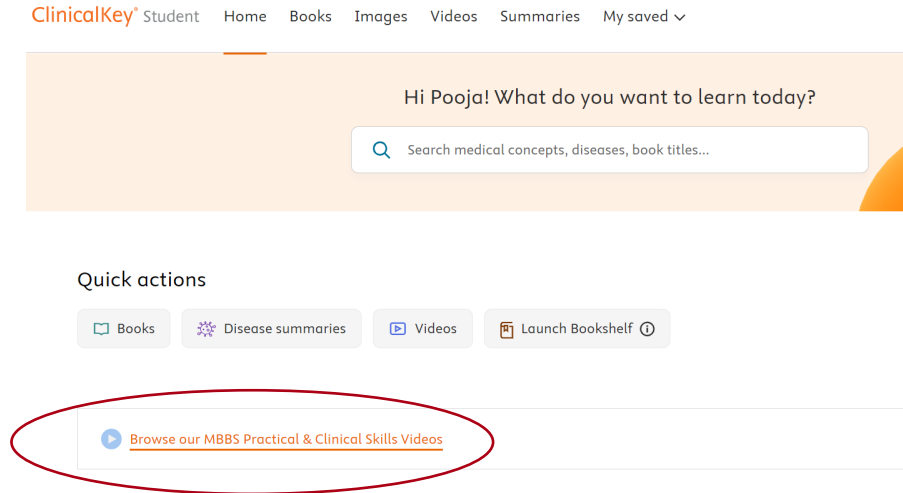
- You have completed the Sign up process and are now ready to browse the Books, Video, Images, Clinical Summaries on the ClinicalKey Student.



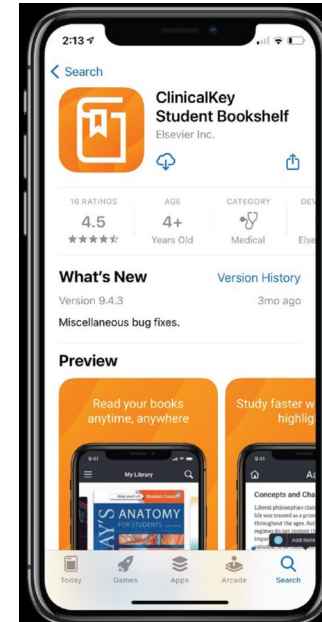
The screenshot shows a web browser window with the URL www-clinicalkey-com.rguhs.remotlog.com/student. The page features a navigation bar with links for Home, Books, Images, Videos, Summaries, and My saved. A personalized greeting reads "Hi Pooja! What do you want to learn today?" followed by a search bar with the placeholder text "Search medical concepts, diseases, book titles...". Below this is a "Quick actions" section with buttons for Books, Disease summaries, Videos, and Launch Bookshelf. A link to "Browse our MBBS Practical & Clinical Skills Videos" is also present. At the bottom, there is a "Get started" section with a computer icon and a purple question mark icon in the bottom right corner.

To fully experience the benefits of ClinicalKey Student, you will need to two more applications:

1. India Skills Video



2. ClinicalKey Student Bookshelf



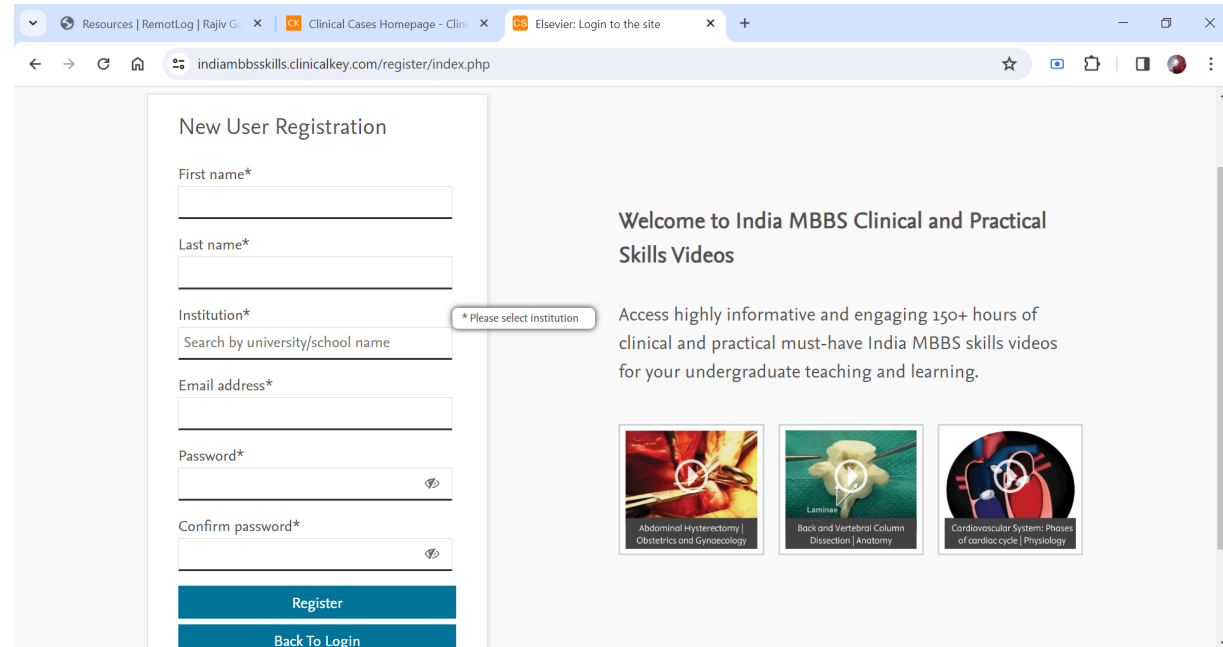
India Skills Video

You can access 'India Skills Video' by clicking on – “ [Browse our MBBS Practical & Clinical Skills Videos](https://indiambsskills.clinicalkey.com/login/index.php)” - <https://indiambsskills.clinicalkey.com/login/index.php>

- Click on 'Register' and create your own profile.

Note –

This one-time registration process is separate from the registration process on the ClinicalKey Student platform.



The screenshot shows a web browser window with the URL indiambsskills.clinicalkey.com/register/index.php. The page is titled "New User Registration" and contains the following fields:

- First name*
- Last name*
- Institution* (with a tooltip that says "* Please select institution") and a search box labeled "Search by university/school name"
- Email address*
- Password* (with an eye icon for visibility)
- Confirm password* (with an eye icon for visibility)

At the bottom of the form are two buttons: "Register" and "Back To Login".

On the right side of the page, there is a welcome message: "Welcome to India MBBS Clinical and Practical Skills Videos". Below this, it states: "Access highly informative and engaging 150+ hours of clinical and practical must-have India MBBS skills videos for your undergraduate teaching and learning." There are three video thumbnails:

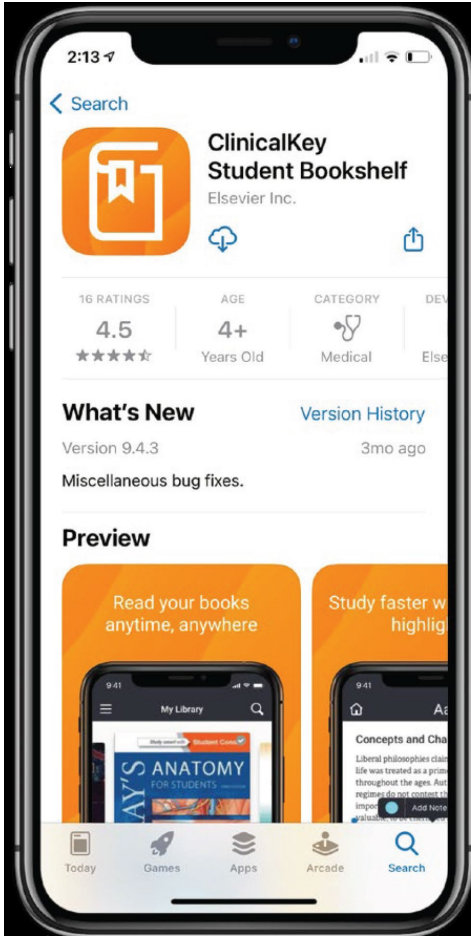
- Abdominal Hysterectomy | Obstetrics and Gynaecology
- Laminae | Back and Vertebral Column Dissection | Anatomy
- Cardiovascular System: Phases of cardiac cycle | Physiology

ClinicalKey Student Bookshelf

The ClinicalKey Student Bookshelf App Bookshelf mobile app gives you offline, convenient access to content and powerful study tools. Highlight text, make notes and create flashcards from your mobile or tablet on the go.

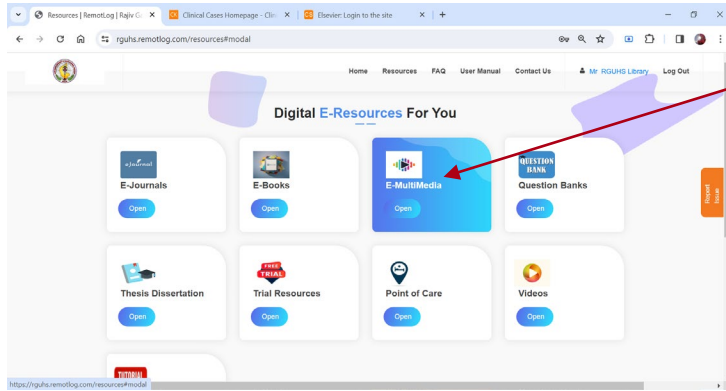
Please note – *You will only need to login to the app once.*

Download the App from here



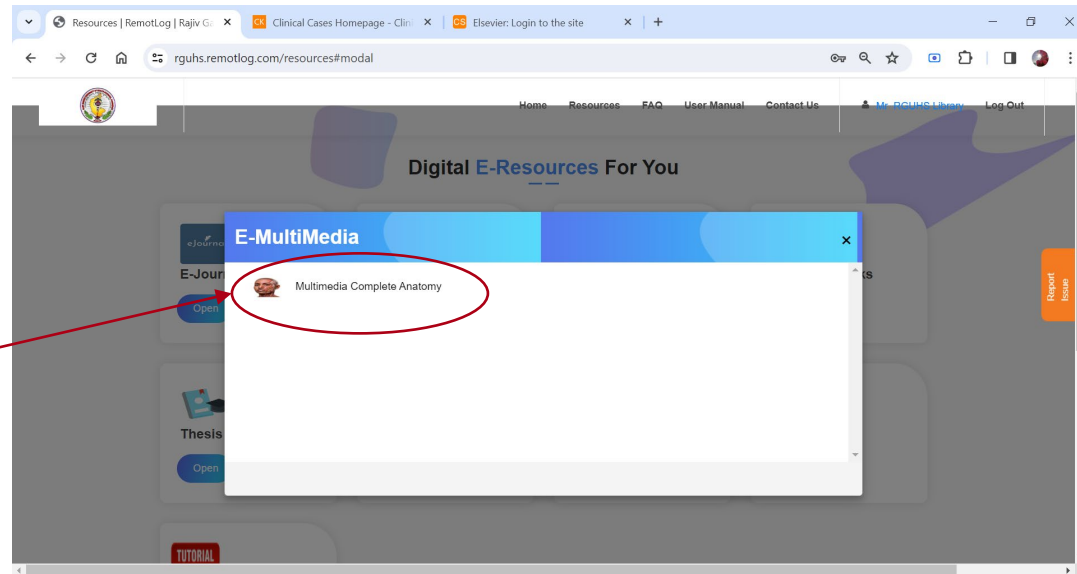
How to Access Complete Anatomy

- On the Remote Log homepage click Open on the Multimedia tab



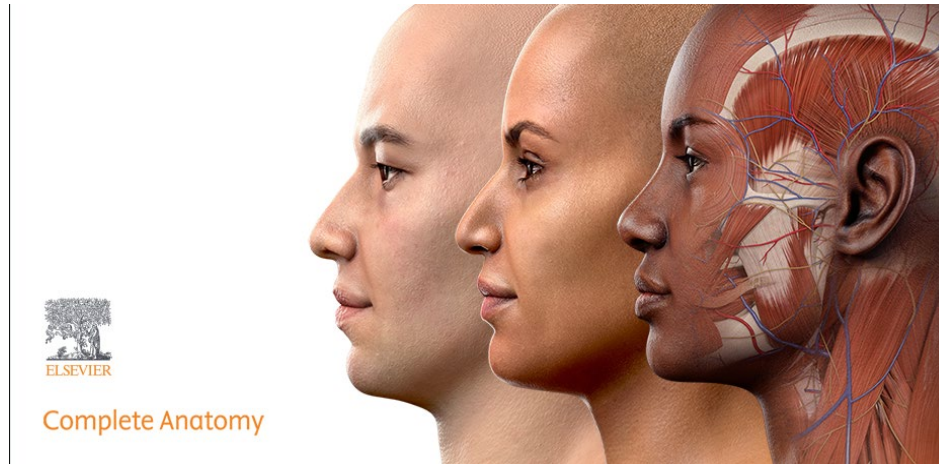
- It will open the multimedia tab with Complete Anatomy

- Click on **Multimedia Complete Anatomy** - *The world's most advanced 3D anatomy platform.*



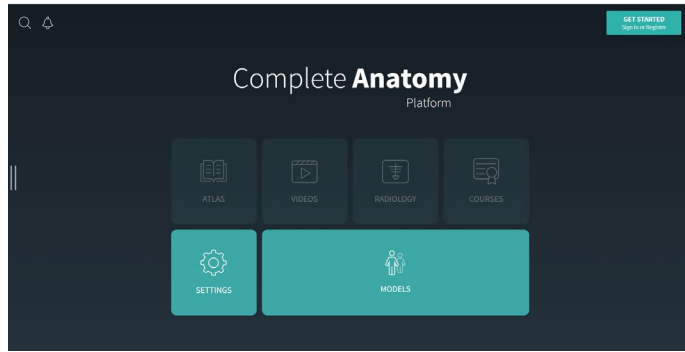
You will now be directed to Microsoft App store, from where you can download the Complete Anatomy Desktop app.

You can also download the app on your phone from Google Play store or Apple App Store.

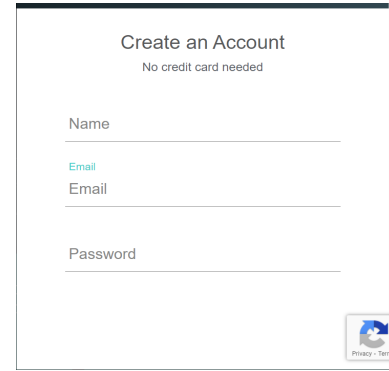


After you have downloaded the app click on 'Get Started'.

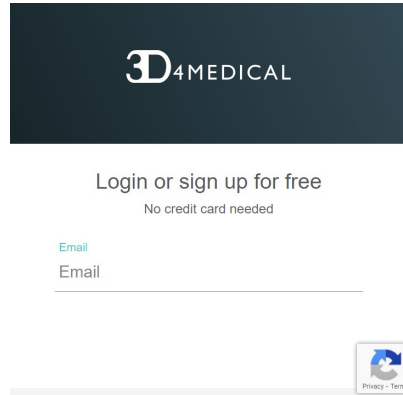
1.



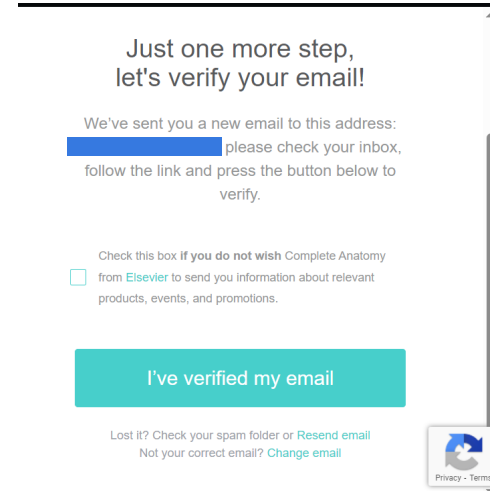
3.

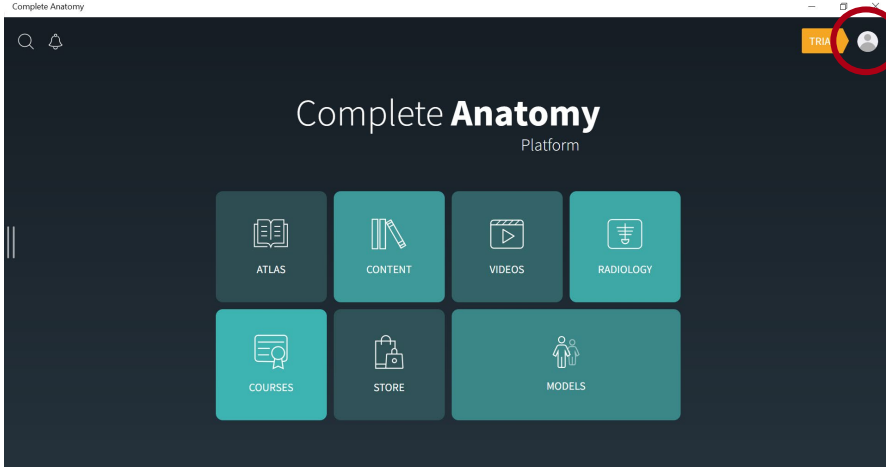


2.



4.



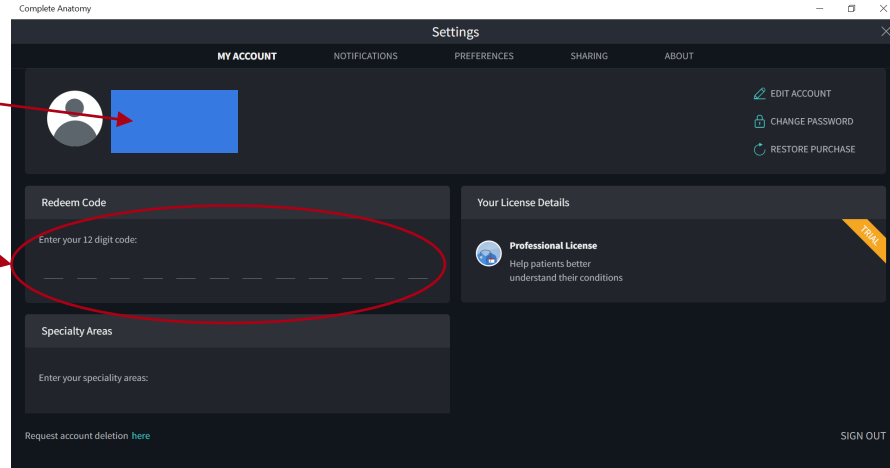


Once you have verified your email ID, you will see the home page. Click on the profile icon.

Here you will see your name and email id.

Enter the 12-digit 'Redeem code' here to activate your account

Note: Please contact your institute's Anatomy Department/Librarian to get the Redeem code



Contact Information

For more information, please write to:

Abhishek Gupta - a.gupta7@elsevier.com

Durga R. Marakala - d.marakala@elsevier.com

Madivalappa B. Karadiguddi - m.karadiguddi@elsevier.com